

Adrien M & Claire B

54, quai Saint-Vincent
69001 Lyon
France

+ 33 4 27 78 63 42
contact@am-cb.net
am-cb.net

SIRET 477 489 264 00028
APE 9001Z TVA FR 31 477 489 264
LICENCE 2-138630 LICENCE 3-104173

Technical Rider

Le mouvement de l'air

Technical contacts:

Technical direction :
Technical management:

Alexis Bergeron
Pierre Xucla
Rodolphe Martin

+33 6 10 29 42 03
+33 6 81 20 08 56
+33 87 16 01 01

technique@am-cb.net
pierx@free.fr
rodомartins@aol.fr



1- GENERAL CONCERNS

1.1- Show duration : approximately **60 minutes**.

1.2- Crew on tour : 3 technicians, 3 performers, 1 musician, 1 artistic director, 1 production manager.

1.3- Mean of transportation for the equipment (continental european tour) : light weight van (12m³). 2 technicians are travelling with the equipment.

1.4- This show involves aerial stunt. Our requirements concerning the rigging of the flying systems have been carefully studied. The presenter must make sure that the venue where the performance is being showed will meet these requirements. **IF ANY DOUBTS**, the company's technical staff **MUST** be closely involved in the substitution process. For all details refer to the SET / RIGGING / VENUE chapter of this rider.

1.5- In order for the videoprojection on the screens and on the stagefloor to provide the best visual impact, every effort in making the darkest possible house will be appreciated.

1.6- Because of the projection on the floor, all the seats underneath the stage level **needs to be cancelled. IF ANY DOUBTS or requests, please contact us.**

1.7- **Control positions for both lights/video and sound needs to be in the house, centered. Some seats may have to be cancelled in the middle of the uppers rows.**

THIS TECHNICAL RIDER IS PART OF THE CONTRACT. ANY CHANGES HAVE TO BE APPROVED BY THE COMPANY'S TECHNICAL STAFF.

2- SET / RIGGING / VENUE

(refer to: Apendix 1 & 2)

2.1 - The company brings :

The set :

- :: 2 aluminium frames of 5m50 of height with the adjustable aircraft cables for rigging.
- :: 2 white gauzes to complete the screens.
- :: Steel weight for the screens.
- :: 3 black borders for the trusses.
- :: 1 set of white marley floor.
- :: Ropes, puleys, spansets, harnesses and flying machinery. Every component is certified and periodically controled.
- :: 1 electric hoist.

2.1 - PRESENTER TO PROVIDE :

2.1.1 - Stage minimal dimensions (also refer to plans) :

- :: 12m deep (from stage line to backwall)
- :: 18m wide (from stage-left wall to stage-right wall)
- :: 12,50m proscenium arch width
- :: 8m height (from stagefloor to the pipes)

2.1.2 - Stage equipment :

- :: Black marley floor over all stage area (INSTALLED BEFORE OUR ARRIVAL) and extra black marley tape.
- :: No borders. No legs.(EXCEPT IF THE STAGE BACK AND SIDE WALLS ARE NOT PAINTED BLACK, THEN A BLACK BOX MUST BE MADE.)
- :: Black backdrop.

2.1.3 - Rigging gear for flying system (refer to plans for details) :

- :: 3 triangle trusses 500mm : 1 x 12m / 1 x 9m / 1 x 6m
- :: 6 electric hoists / 1 TON authorized load (same speed, to be lift together)
- :: 8 pipes / 50mm diameter / 6m long
- :: 30 swivel cheeseboroughs / for 50mm diameter pipes
- :: 4 lateral anchors for side stability of the flying grid. (We do have black aircraft cables and ratchet straps)

2.1.4 - Rigging gear for videoprojectors (refer to plans for details) :

- :: 2 pipes / 50mm diameter / 1,5m long
- :: 2 cheeseboroughs / 90 degree

2.1.5 - equirements for our electric hoist :

- :: 500kg of weight (
- :: 1 electrical outlet 32A Triphase (3 + N + Grd)
- :: 1 electrical outlet 16A

2.1.6 - During set-up requirement :

- :: Genie lift / 8m working height
- :: Ladder / 3m working height

3- LIGHTS / POWER REQUIREMENTS

(refer to appendix 3 for plot)

3.1 - The company brings :

- :: 1 computer (installed on stage)
- :: 1 Enteccc RJ45-DMX interface
- :: 1 Nano Korg controller
- :: 3 LED ramps with 12V power adaptor
- :: 1 smoke machine Look Unique 2
- :: 2 barn doors for PAR 64

3.2 - PRESENTER TO PROVIDE :

- :: 8 profiles RJ 613sx type (1kW / 28°-54°)
- :: 16 profiles RJ 614sx type (1kW / 16°-35°) / *Including 6 for FOH.*
- :: 8 profiles RJ 713sx type (2kW / 29°-50°)
- :: 5 profile RJ 714sx (2kW / 15°-40°)
- :: 8 PC 2000W (*clear lens*)
- :: 1 Fresnels 5000W
- :: 6 PAR64 (cp60)
- :: 5 cycliodes
- :: 1 Martin Atomic 3000 strobs

- :: 1 smoke machine (Look Unique2 or Viper type)

- :: 2 booms for 4 profiles each (height : 0,5m / 1,1m / 1,9m / 2,6m)
- :: 10 floor bases
- :: 1 projector stand (height : 1m50)

3.3 - Height of fly bars is 8,50m

3.4 - Enough DMX cables to link the 2 smoke machines, the strob light and the LED bars.

3.5 - All the projectors located on the trusses (refer to Appendix 3 / Fig.6) must be powered through a 6 circuits snake.

3.6 - 5 pipes / 50mm diameter / 1,5m long

3.7 - ALL THE COLOR FILTERS (refer to plan for sizes and quantity) ARE PROVIDED BY THE PRESENTER. WE TOUR WITH A SMALL AMOUNT OF EACH TO FACE A LAST MINUTE PROBLEM. IF YOU HAVE DIFFICULTY TO LOCALLY SOURCE SOME OF THE REFERENCES, PLEASE CONTACT US.

4- SOUND

(refer to appendix 4 for patch details)

MUSIC IS PERFORMED LIVE BY A MUSICIAN LOCATED ON STAGE.

4.1 - The company brings :

- :: 1 laptop computer
- :: 1 iPad
- :: 2 soundcards
- :: Various musical instruments (guitar, chinese harp, percussions, etc...)
- :: 1 ear-monitor system

4.2 - PRESENTER TO PROVIDE :

4.2.1 - PA system :

- :: Professional grade amplified stereo PA system adapted to the house, with subwoofers.
- :: 2 speakers (15") upstage rigged (for stage monitoring and PA effect).
- :: 2 stage monitors rigged or on stage at ear height.
- :: 2 side effect speakers in the house (15") for sound effects.
- :: 2 rear effect speakers in the house (12" / 1 channel for both) for sound effect.
- :: Cables and amplifiers to manage 6 separated output channels.

4.2.1 - Control booth :

- :: 1 mixing desk 32 in / 16 aux / 16 out with built-in EQ
- :: 2 reverbs (built-in or external)
- :: 3 compressor channels (built-in or external)

4.2.2 - Backline / on stage :

- :: 3 stage risers (2m x 1m) / 2 at 0,6m height / 1 at 0,2m height
- :: 1 snake patch 16 in / 4 out
- :: 1 power outlet 240v/16A on stage for backline (refer to plan for musician's position)
- :: Microphones :
 - 2 x DPA 4099 (or KM184)
 - 1 x Beyer Dynamic M88
 - 1 x AKG C414
 - 1 x AKG 535
 - 1 x Sennheiser e604
 - 1 x HF kit with lavalier DPA 4061
 - 2 x active DI's
- :: 1 small lamp.

4.2.3 - Intercom :

- :: 2 intercoms at FOH position (lights + sound)
- :: 2 wireless intercoms on stage (stage manager + musician)

5- VIDEO

5.1 - The company brings :

- :: 2 computers.
- :: 2 ethernet switch
- :: 2 airport express
- :: 3 videoprojectors + 30m HDMI cables + Chief rigging systems
- :: 1 camera
- :: 1 Wacom graphic pad.
- :: 1 RJ45 ethernet cable cat.6 / 80m (to link stage with control booth)
- :: 2 VGA cable / 40m (to link stage with control booth)

5.2 - PRESENTER TO PROVIDE :

- :: 2 non-dim power outlets 220v/16A on the video flybar (refer to plan).
- :: 2 lamps.

6- COSTUME / HOSPITALITY

6.1 - The company brings :

- :: 4 male costumes (trousers + shirt + t-shirt + underwear). Cotton made. No dryer (except for underwear and t-shirt).
- :: 1 female costume (dress + underwear). Cotton made. No dryer.

6.2 - PRESENTER TO PROVIDE :

- :: 4 lockable dressing rooms with shower (or easy access to a shower).
- :: 4 body towels.
- :: 4 small towels.
- :: Bottles of water for dancers on stage or possibility to fill in bottles near the stage.
- :: A light catering with dry fruits, fresh fruits, chocolate, cereal bars, coffee and tea is much appreciated.

7- LOGISTICS / SCHEDULE / STAFF

(refer to the standard work schedule at the end of this rider)

7.1 - FOR EUROPEAN TOUR (less than 800km from Lyon, France):

- :: The equipment is travelling by truck (12m³) with 2 technicians. We need a secure parking place.
- :: It arrives on D-2, in the evening. If there is no safe parking place, we will need to unload the truck upon our arrival.
- :: The third technician arrives on D-2 by train or plane.
- :: Artists (3 dancers and 1 musician) arrives by train or plane on D-day or D-1, depending on the travel time and schedules.
- :: Transfers between train station and hotel must be arranged by the presenter.

7.2 - FOR INTERNATIONAL TOUR :

- :: The equipment is travelling by Cargo plane.
- :: It arrives the week before the set-up in the venue. Make sure you can handle and safely stock the crates and cases.
- :: The technical and production staff (3 technicians, 1 production manager) arrives on D-3 or D-2 by plane, depending on the travel time and schedules.
- :: Artists (3 dancers and 1 musician) arrives on D-2 or D-1, depending on the travel time and flight schedules.
- :: Transfers between airport and hotel must be arranged by the presenter.

7.3 - IN ORDER TO RESPECT OUR STANDARD SCHEDULE (refer to Appendix 5 of this rider) THE VENUE'S STAFF MUST ORGANIZE A PRE-RIGG OF THE LIGHT AND TRUSSES. A SPECIFIC PLAN WILL BE PROVIDED.

7.4 STAFF TO PROVIDE :

7.4.1 - Set Up :

- :: Set-Up and Rehearsal time is 5 periods of 4hrs with :**
- 2 electricians (for 3 periods the 1st set-up day)**
- 1 light board operator (for set-up, rehearsals and show)**
- 3 stage hands (for 2 periods the 1st set-up day)**
- 1 stage manager (for set-up, rehearsals and show)**
- 1 sound engineer (with knowledge of video systems) (for set-up, rehearsals and show)**

7.4.2 - Take out :

- :: 1 period of 4hrs at the end of the last show with:**
- 3 electricians**
- 3 stage hands**
- 1 audiovisual technician**

7.4.3 - Costume cleaning :

- :: 1 period of 4h after each show with :**
- 1 person**
- (in case of a multiple shows serie, we can wash every 2 shows but the costumes needs a preparation time in order to be ready at least 3hrs before each show.)*

Appendix 1

Fig. 1 : Set Front view - schematic :

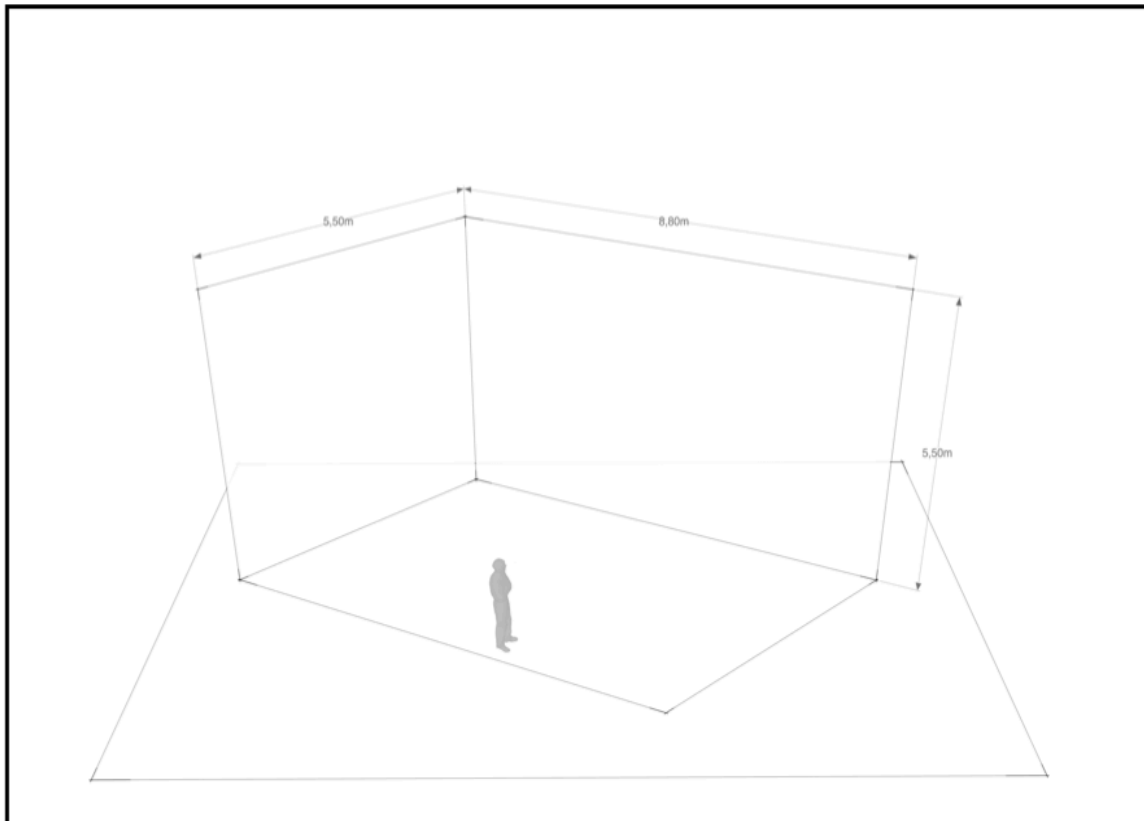


Fig. 2 : Set Front view - picture



Fig. 3 : Trusses assembly for flying system - schematic :

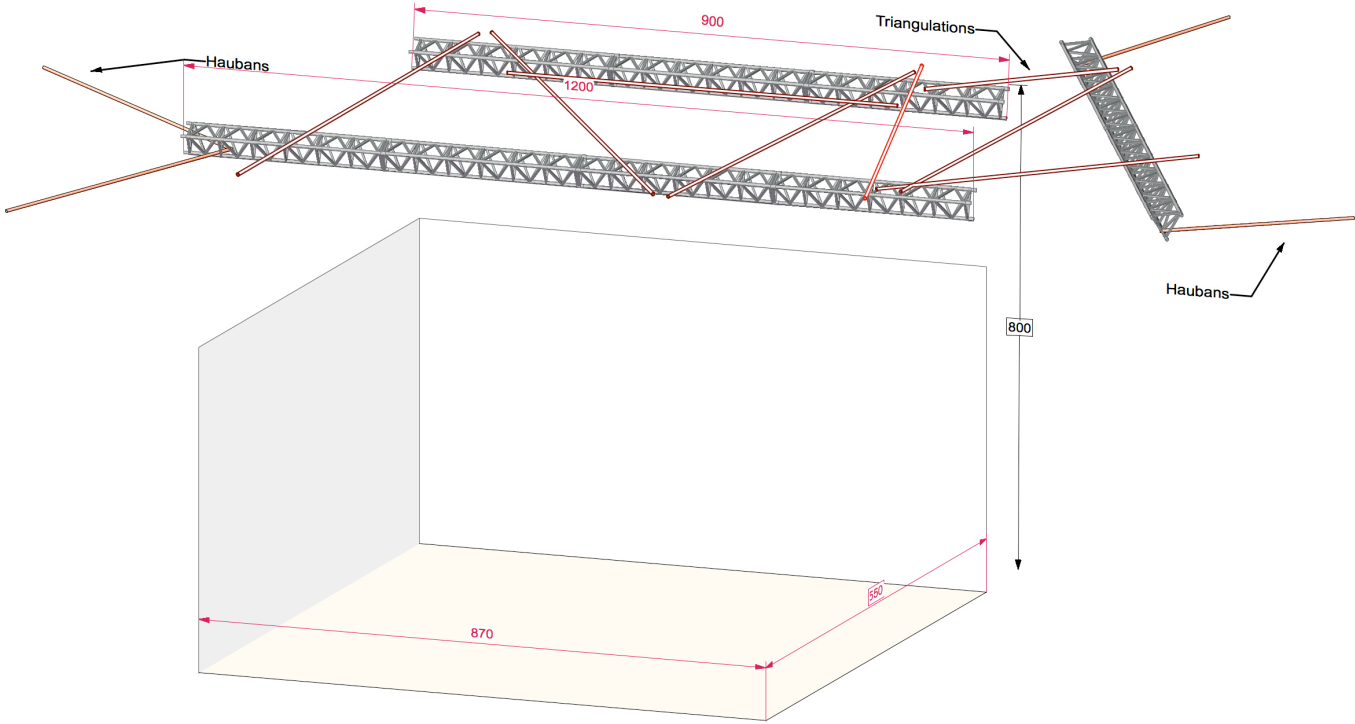
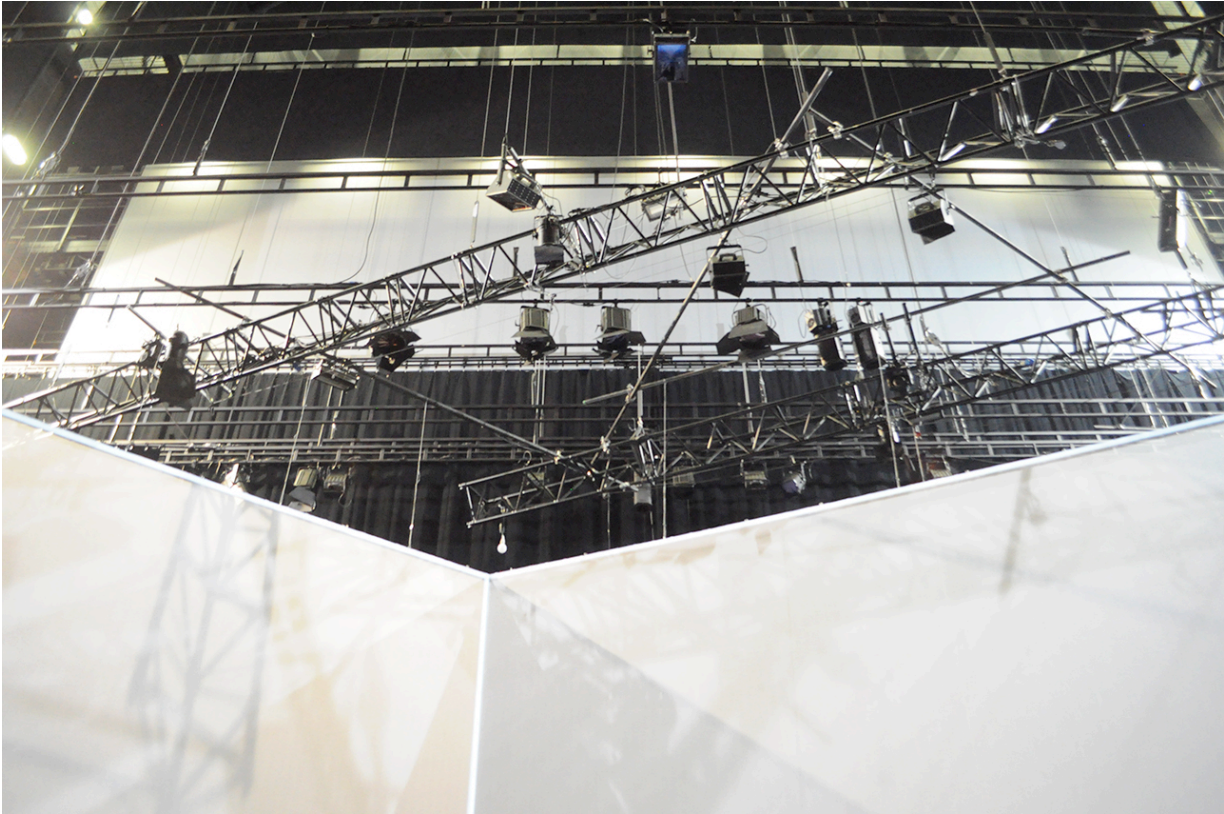
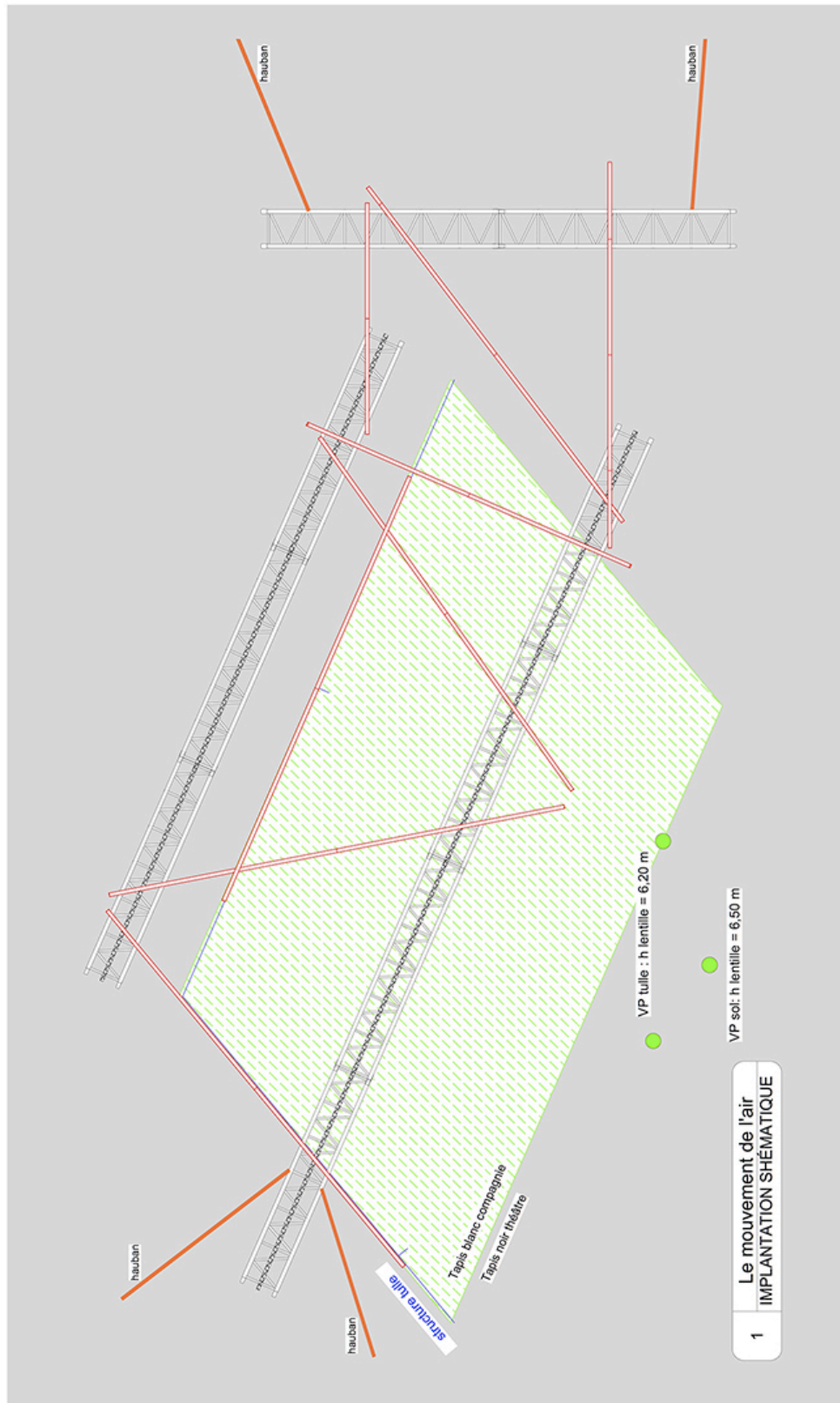


Fig. 4 : Trusses assembly for flying system - picture :



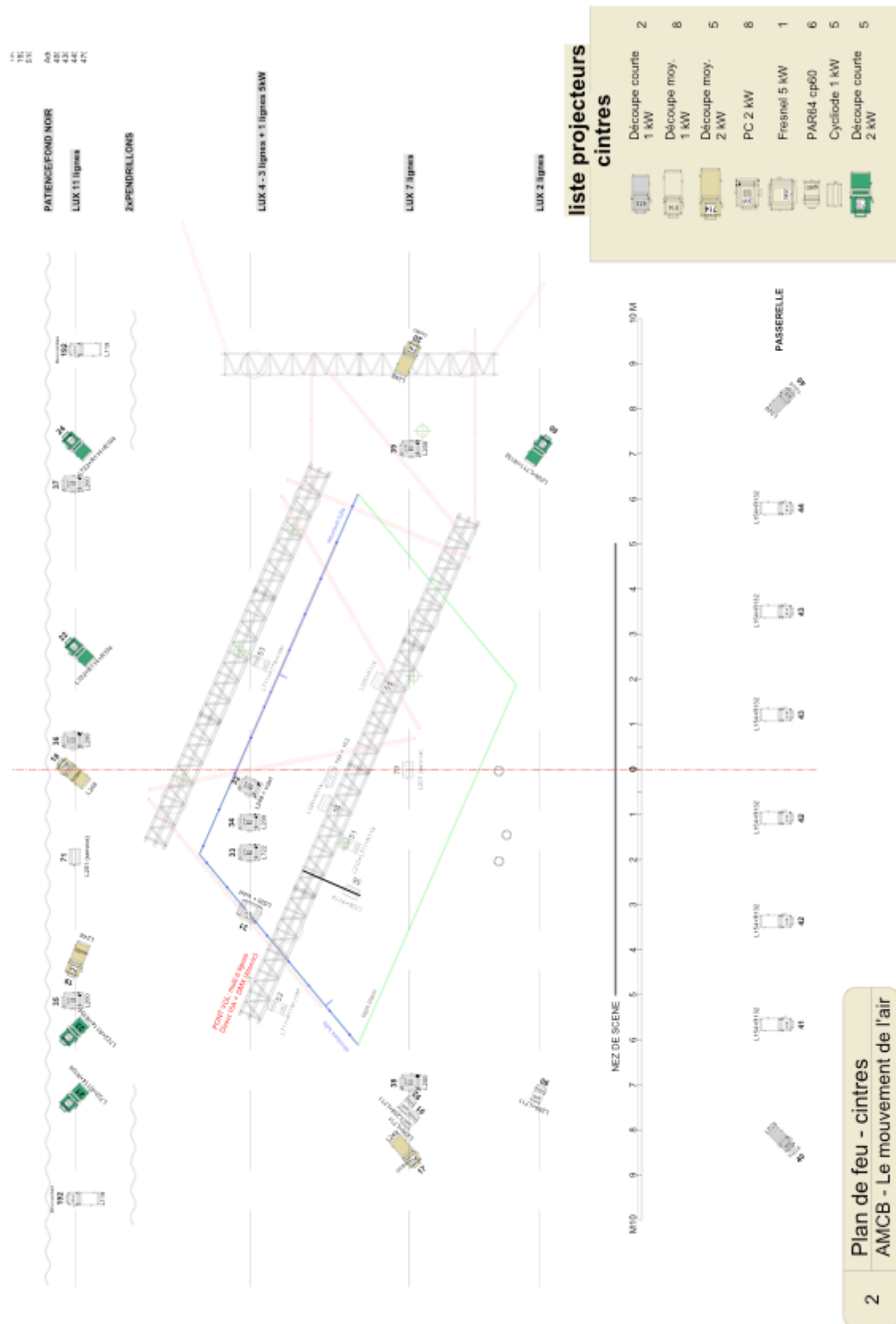
Appendix 2

Fig. 5 : Standard rigging plan for the set, flying system and video.
(This figure also shows the white marley)



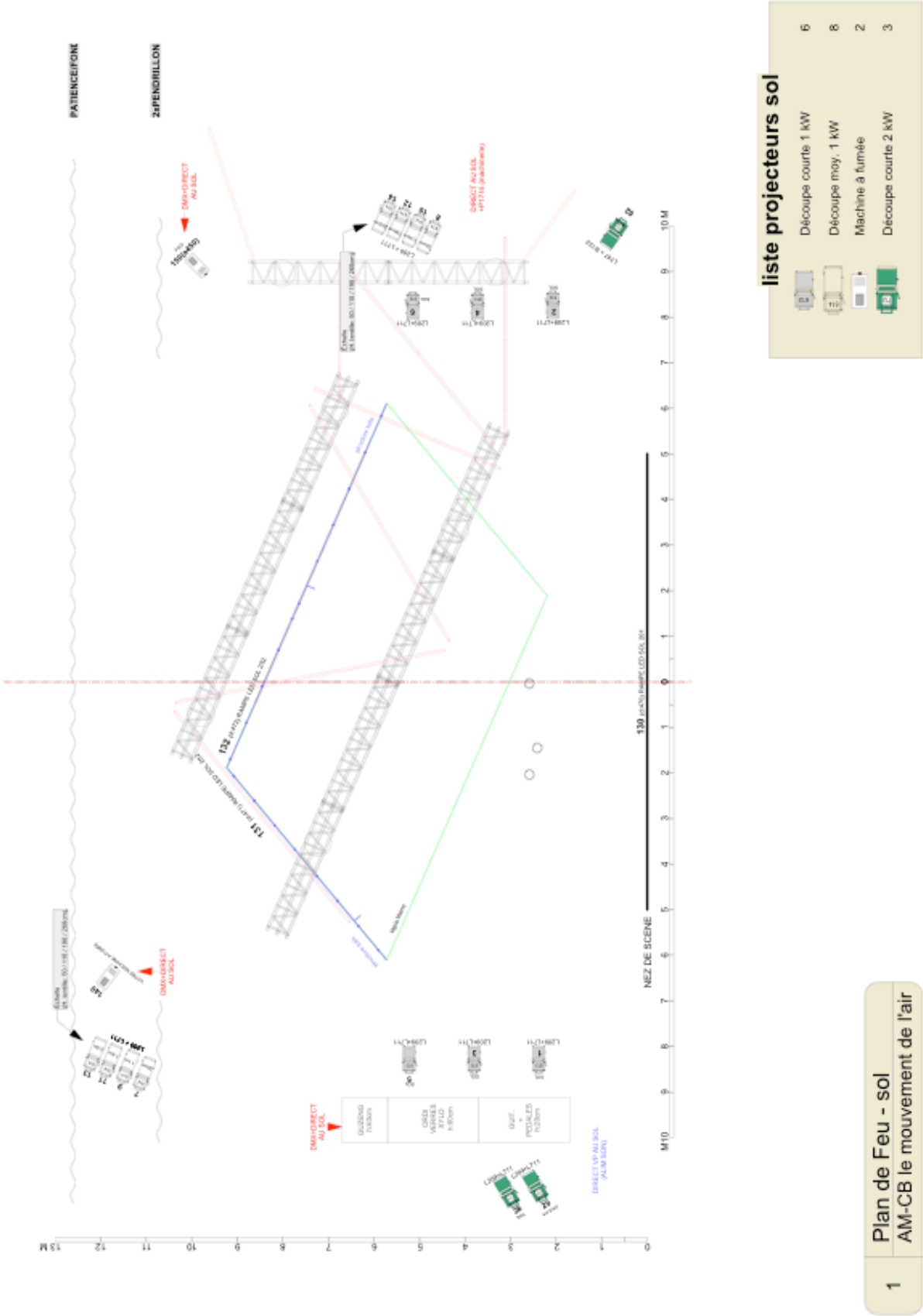
Appendix 3

Fig. 6 : Standard light plot - Flybars :



Appendix 3

Fig. 7 : Standard light plot - Floor plan :



Appendix 4

Sound Patch :

	INPUT	SOURCE
1	Electric guitar	Direct box
2	Chines harp / body	Beyer dynamic M88
3	Chinese harp / strings	AKG C414
4	Carillon	DPA 4099 (or KM 184)
5	Metallophone	DPA 4099 (or KM 184)
6	Floor tom	E 604
7	Vox	AKG C535
8	Acoustic guitar	Wireless DPA 4061
9	Spare electric guitar	Direct box
10	Musician Laptop 1	XLR
11	Musician Laptop 2	XLR
12	Musician Laptop 3	XLR
13	Musician Laptop 4	XLR
14	Musician Laptop 5	XLR
15	Musician Laptop 6	XLR
16	Sound effects Laptop 1	XLR
17	Sound effects Laptop 2	XLR
18	Sound effects Laptop 3	XLR
19	Sound effects Laptop 4	XLR
20	Sound effects Laptop 5	XLR
21	Sound effects Laptop 6	XLR
22	Sound effects Laptop 7	XLR
23	Effect return 1 L	XLR
24	Effect return 1 R	XLR
25	Effect return 2 L	XLR
26	Effect return 2 R	XLR
27	Effect return 3 L	XLR
28	Effect return 3 R	XLR

	OUTPUT	SOURCE
1	Upstage center	
2	House Rear effect	
3	FOH Stage left	
4	FOH Stage right	
5	Effect house left	
6	Effect house right	
7	Stage left monitor	
8	Stage right monitor	
9	Musician monitor	Ear monitor
10		Send 2 (Chinese harp)
11	Send sound effect Laptop	
12		Delay
13		Distortion
14		Reverse
15	Send effect 1	Small hall
16	Send effect 2	Plate
17	Send effect 3	Rotary

Appendix 5

Standard schedule / considering a first show time at 8:30 PM

Pre-Rigg :

1 period (4hrs) :Set-up of lights and trusses with the provided adapted plans.

- 1 stage manager
- 2 riggers
- 3 electricians

D Day -2 :

Arrival of the technical staff, parking of the truck at the venue. If the arrival time is soon enough, the crew will visit the venue and verify the pre-rigg.

D Day -1 :

9h-13h : Ground marking / flight systems / video rigg / light rigg

- 1 electrician chief
- 2 electricians
- 1 stage manager
- 2 stage hands
- 2 flybar operator (if counterbalanced flybars)
- 1 sound engineer

14h-18h :Rigging continue / sound rigg / set / Costume clean or preparation

- same crew
- 1 wardrobe

18h-19h: Video focus

- 1 electrician

19h-23h: Lights focus

- 1 chief electrician
- 2 electricians
- 1 stage hand

D Day :

9h-12h30 : Flying systems adjustments / Lights programming

- 1 chief electrician
- 2 electricians
- 1 stage manager
- 1 stage hand

13h-14h : Sound check

- 1 sound engineer

14h-16h : Video adjustments

- 1 electrician

16h-18h : Rehearsal

- 1 chief electrician
- 1 stage manager
- 1 sound engineer
- 1 wardrobe (the day of the first show please book the wardrobe until showtime)

19h-20h : Showcall

1 chief electrician
1 stage manager
1 sound engineer

20h-20h30 : Public entrance

20h30-21h30 : SHOW TIME

21h30-22h : Public exit

22h-22h30 : Stage quick clean

Following days :

:: Except if we experienced a problem during show, company crew will arrive 3hrs before Show Time.
:: Daily costume care : 1 wardrobe for 4hrs call.

Last show day :

20h30-21h30 : SHOW TIME

21h30-22h : Public exit

22h-1h : Take out

1 chief electrician
2 electricians
1 stage manager
2 stage hands
1 sound engineer
1 wardrobe

Appendix 6

Fireproof certificate (*originals provided upon arrival*)

Attestation de classement

Nous soussignés : Société TEVILOJ
26, rue Victor Faugier
38200 VIENNE

Certifions que la marchandise :

TULLE GOBELIN 1150 réf 0137

Métrage : 9.10 mètres

Faisant l'objet de notre facture : FC0000208 en date du 04/07/2014

Etablie pour le compte de : ATELIER ACMB
54 QUAI SAINT VINCENT
69001 LYON

Est conforme au tissu testé par CSTB
84, avenue Jean Jaurès
Champs sur Marne
77421 MARNE LA VALLEE

Procès verbal N° **MZC-10-1630** en date du 27 mai 2010

Classement	M1
Durabilité	Non limitée
	Article non lavable, non nettoyable à sec

Etabli à Vienne le 04/07/2014

TEVILOJ
au capital de 140 000 €
26, rue Victor Faugier
38200 VIENNE
Tél. 04 74 31 73 42 - Télécopie 04 74 31 74 48
RCS Vienne B 350 711 024 / A M E 174 A / RM 382
TVA FR 80 350 711 024

Devis N° DE0000662
Du 26/09/14

C3087

ATELIER AMCB

54 QUAI SAINT VINCENT

69001 LYON

Contact: ALEXIS BERGERON

Tél: 06 10 29 42 03

Fax:

Mail: alexis.bergeron@free.fr

Référence:

Référence	Désignation	Qté	P.U Brut	Rem%	P.U.Net	Montant HT
07500-020	TAPIS DE DANSE NOIR/BLANC M2 150cm 1700g/m² Débité en 4 lés de 9.50 m Remise exceptionnelle	38,00	26,40	10%	23,76	902,88
DIVERS_U	ADHESIF TAPIS DANSE BLANC HTE QUALITE 1 carton de 36 rouleaux 33 M x 5 cm - remise carton entier	36,00	6,50	15%	5,53	198,90
PORT	LIVRAISON MESSAGERIE STANDARD 1 POINT CHERBOURG Adresse de livraison complète à renseigner par le client (Nom, adresse, code postal, ville, contact sur place, téléphone)	1,00	90,00		90,00	90,00

Conditions de règlement	
VIREMENT	06/10/14

TOTALS	
Total HT	1191,78 €
T.V.A 20%	238,36 €
Total TTC	1430,14 €
Acompte	0,00 €
NET A PAYER	1430,14 €

Devis valable 3 mois sous réserve de la fluctuation du cours des matières premières.
 Pour accepter ce devis, merci de nous le retourner daté et signé avec le cachet de l'entreprise précédé de la mention "Bon pour accord".

Commercial(e):

LHOMME Anna-Gaëlle

Identifiant national de compte bancaire - RIB	
Banque Guichet N° compte Clé Devise	10096 18583 0081804601 77 EUR
IBAN (International Bank Account Number)	FR76 1009 6185 8300 0818 0460 177
BIC (Bank Identifier Code)	CMCIFRPP



TEVILOJ - S.A.R.L AU CAPITAL DE 140 000€- RCS VIENNE 350 711 024 - NAF 174A - SIRET 350 711 024 00025 - N°TVA FR 80 350 711 024
 Page 1